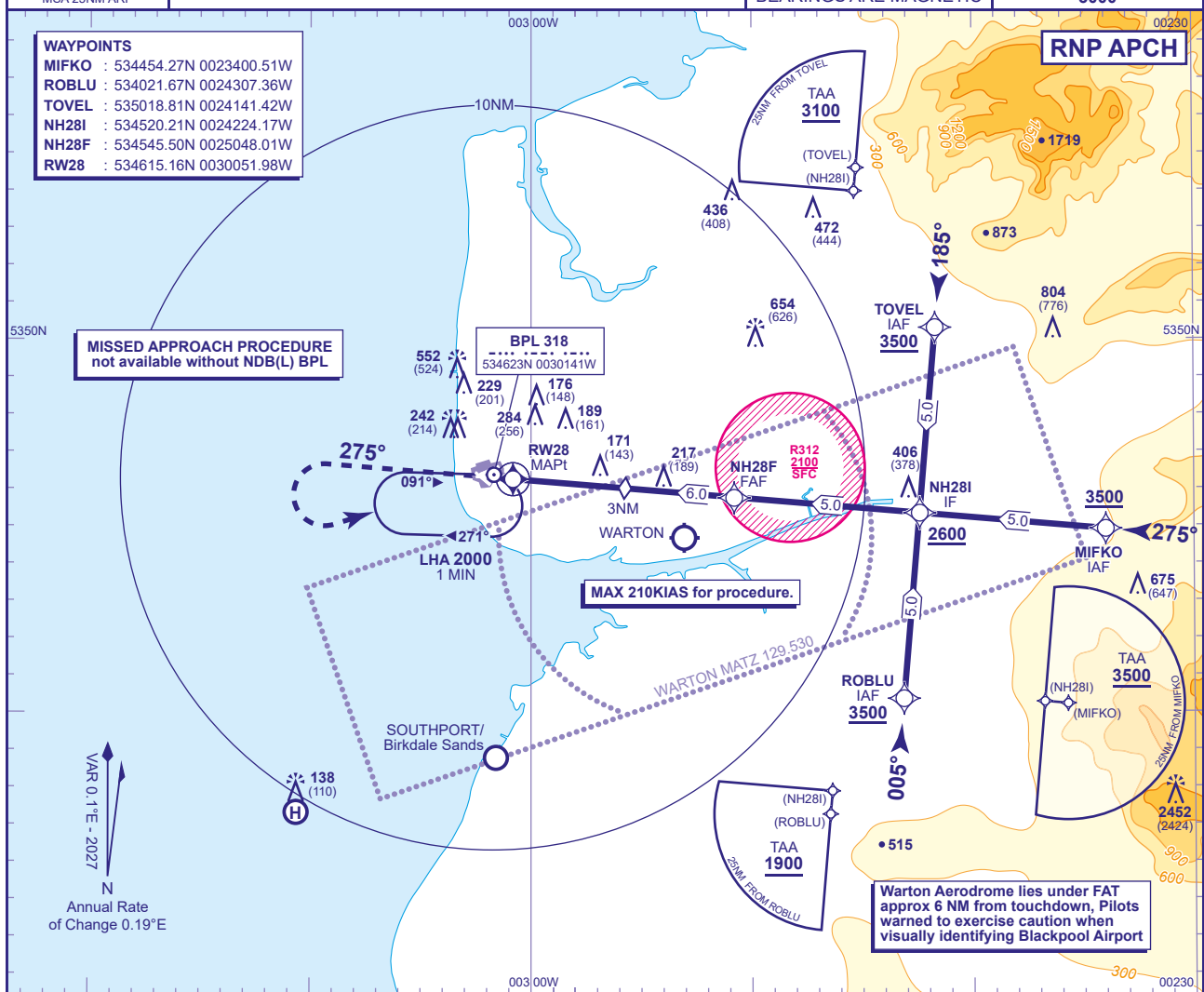


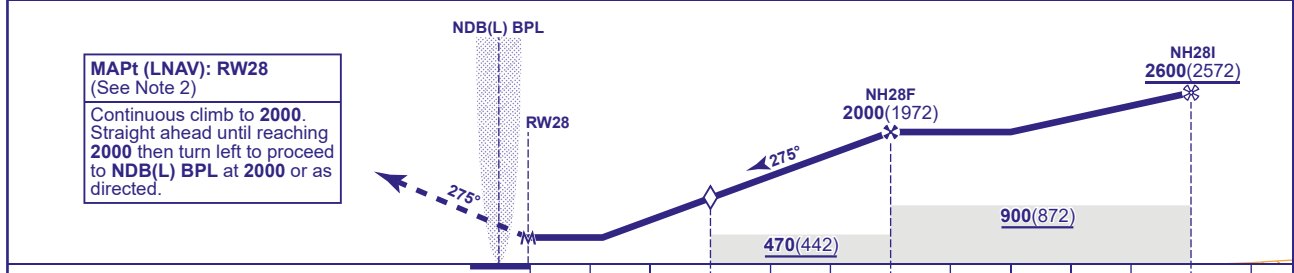
BLACKPOOL
RNP
RWY 28
(ACFT CAT A,B,C,D)

APP	119.955	BLACKPOOL APPROACH	AD ELEVATION	34
TWR	119.955	BLACKPOOL TOWER	THR ELEVATION	28
ATIS	127.205	BLACKPOOL INFORMATION	OBSTACLE ELEVATION	
			2452 AMSL (2424) (ABOVE THR)	
			BEARINGS ARE MAGNETIC	

TRANSITION ALTITUDE
3000



RECOMMENDED PROFILE Gradient 5.3%, 323FT/NM					
NM to RW28	6	5	4	3(SDF)	2
ALT(HGT)	2000(1972)	1680(1652)	1360(1332)	1040(1012)	720(692)



						0NM	3	6			11	
Aircraft Category		A	B	C	D	Rate of descent	G/S KT	160	140	120	100	80
OCA (OCH)	LNAV	420(392)	420(392)	420(392)	420(392)		FT/MIN	861	746	640	533	426
VM(C)OCA (OCH AAL)	Total Area	590(556)	830(796)	930(896)	930(896)							
	South of RWY 10/28	N/A	N/A	N/A	N/A							

NOTE 1 Aircraft not permitted below **1670** over EGR312 for the purpose of landing at Blackpool. Recommended profile **MANDATORY**.
2 Missed Approach Procedure shall be converted to a conventional Missed Approach upon reaching **2000**.